

100% OUTDOOR
FABRICS



百 分 百 室 外 面 料



100% OUTDOOR FABRICS

百 分 百 室 外 面 料



Outdoor
户外



Commercial
酒店工程



Decor
装饰材料



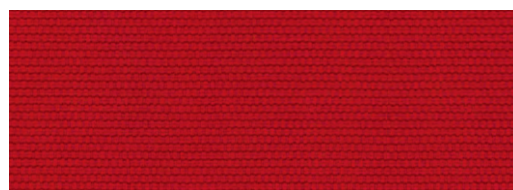
15221360

220gsm(± 10%)



15815824

285gsm(± 10%)



15815801

285gsm(± 10%)



15221415

220gsm(± 10%)



15221362

220gsm(± 10%)



15221361

220gsm(± 10%)



15221416

220gsm(± 10%)



15216091

240gsm(± 10%)



15815816

285gsm(± 10%)



15221363

220gsm(± 10%)

100% OUTDOOR FABRICS

百分百室外面料



Outdoor
户外



Commercial
酒店工程



Decor
装饰材料



15221364

220gsm(± 10%)



15221366

220gsm(± 10%)



15221417

220gsm(± 10%)



15815802

285gsm(± 10%)



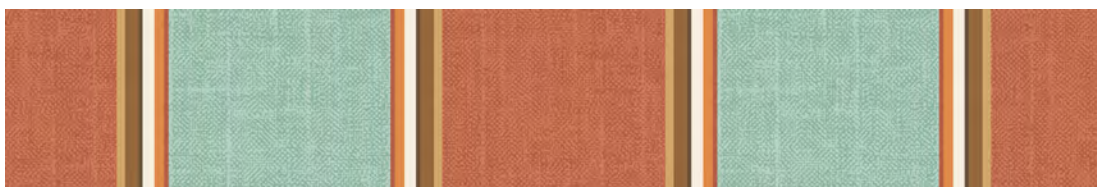
15815823

285gsm(± 10%)



15216085

240gsm(± 10%)



15221418

220gsm(± 10%)



15221365

220gsm(± 10%)



15221367

220gsm(± 10%)

100% OUTDOOR FABRICS

百分百室外面料



Outdoor
户外



Commercial
酒店工程



Decor
装饰材料



15221368

220gsm(± 10%)



15221370

220gsm(± 10%)



15221419

220gsm(± 10%)



15815804

285gsm(± 10%)



15221369

220gsm(± 10%)



15221371

220gsm(± 10%)



15216090

240gsm(± 10%)



15221420

220gsm(± 10%)

100% OUTDOOR FABRICS

百 分 百 室 外 面 料



Outdoor
户外



Commercial
酒店工程



Decor
装饰材料

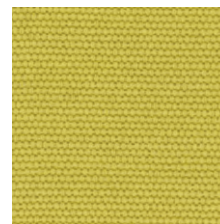


15221372

220gsm(± 10%)



15815822 285gsm(± 10%)



15815803 285gsm(± 10%)



15216092 240gsm(± 10%)



15815819 285gsm(± 10%)



15221421

220gsm(± 10%)



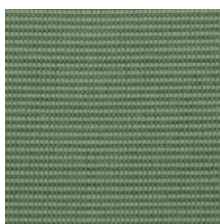
15221373

220gsm(± 10%)



15221374

220gsm(± 10%)



15216088 240gsm(± 10%)



15815862 285gsm(± 10%)



15221422

220gsm(± 10%)



15221375

220gsm(± 10%)

100% OUTDOOR FABRICS

百 分 百 室 外 面 料



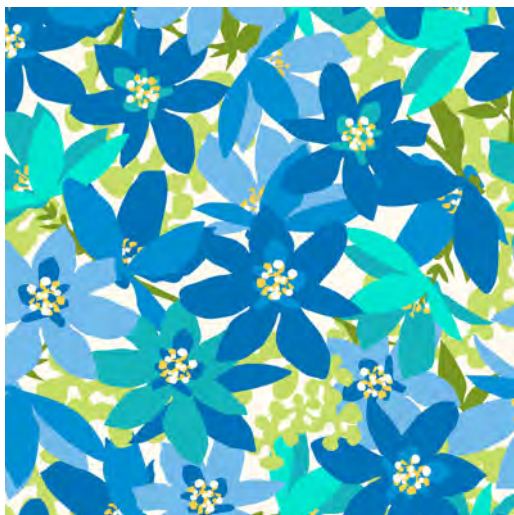
Outdoor
户外



Commercial
酒店工程

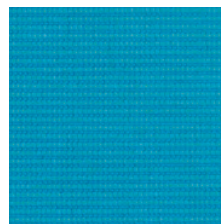


Decor
装饰材料

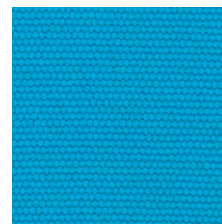


15221376

220gsm(± 10%)



15216086 240gsm(± 10%)



15815826 285gsm(± 10%)



15815817 285gsm(± 10%)



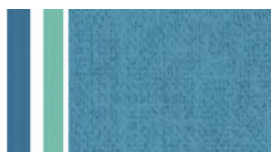
15815863 285gsm(± 10%)



15221423



220gsm(± 10%)



15221377

220gsm(± 10%)



15221378

220gsm(± 10%)



15221379

220gsm(± 10%)

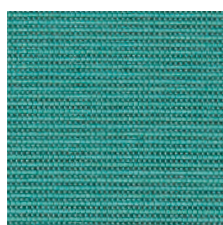


15221424

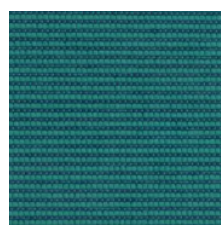
220gsm(± 10%)



15815864 285gsm(± 10%)



15216143 240gsm(± 10%)



15216095 240gsm(± 10%)



15216041 240gsm(± 10%)

100% OUTDOOR FABRICS

百分百室外面料



Outdoor
户外



Commercial
酒店工程

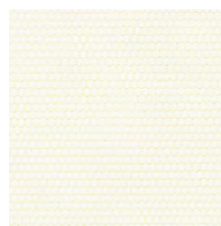


Decor
装饰材料

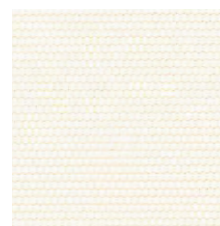


15221380

220gsm(± 10%)



15815827 285gsm(± 10%)



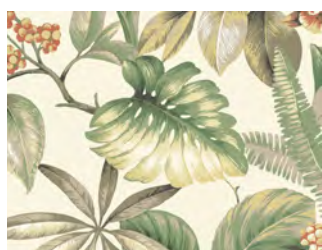
15815807 285gsm(± 10%)



15216142 240gsm(± 10%)

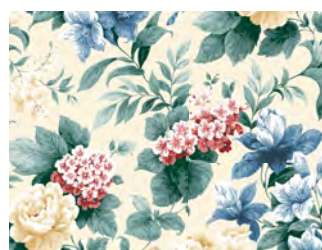


15216141 240gsm(± 10%)



15221381

220gsm(± 10%)



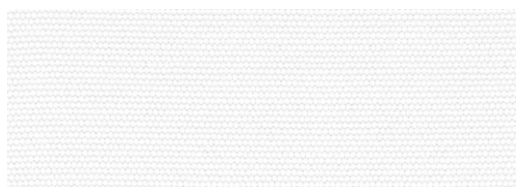
15221382

220gsm(± 10%)



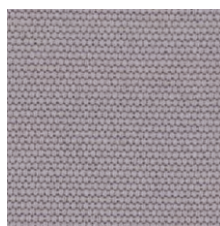
15221383

220gsm(± 10%)

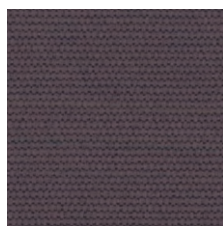


15815002

285gsm(± 10%)



15815806 285gsm(± 10%)



15815805 285gsm(± 10%)



15221384

220gsm(± 10%)



15221425

220gsm(± 10%)



15815424

285gsm(± 10%)

100% OUTDOOR FABRICS

百分百室外面料



Outdoor
户外



Commercial
酒店工程



Decor
装饰材料



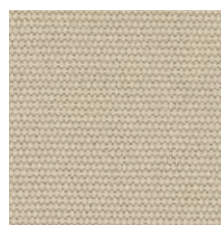
15221385

220gsm(± 10%)

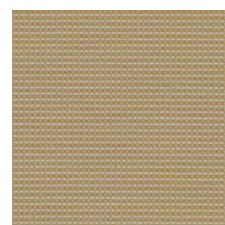


15815808

285gsm(± 10%)



15815305 285gsm(± 10%)



15216135 240gsm(± 10%)



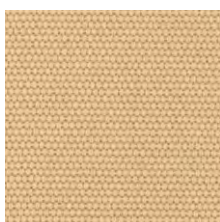
15221386

220gsm(± 10%)



15221387

220gsm(± 10%)



15815809 285gsm(± 10%)



15216136 240gsm(± 10%)



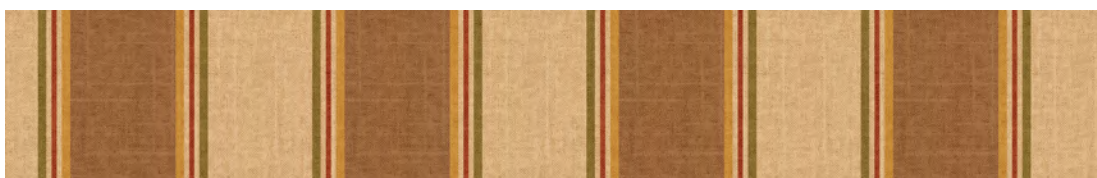
15815530

285gsm(± 10%)



15221388

220gsm(± 10%)



15221426

220gsm(± 10%)

100% OUTDOOR FABRICS

百分百室外面料



Outdoor
户外



Commercial
酒店工程

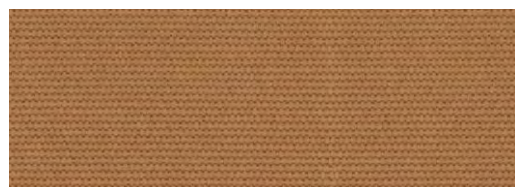


Decor
装饰材料



15221389

220gsm(± 10%)



15815810

285gsm(± 10%)



15815811 285gsm(± 10%)



15216138 240gsm(± 10%)



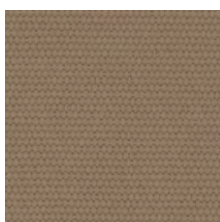
15221390

220gsm(± 10%)



15221391

220gsm(± 10%)



15815042 285gsm(± 10%)



15216140 240gsm(± 10%)



15815812

285gsm(± 10%)



15221392

220gsm(± 10%)



15221427

220gsm(± 10%)

100% OUTDOOR FABRICS

百分百室外面料



Outdoor
户外



Commercial
酒店工程



Decor
装饰材料



15221393

220gsm(± 10%)



15221395

220gsm(± 10%)



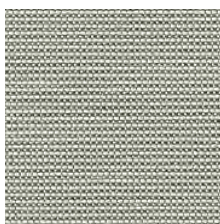
15221394

220gsm(± 10%)

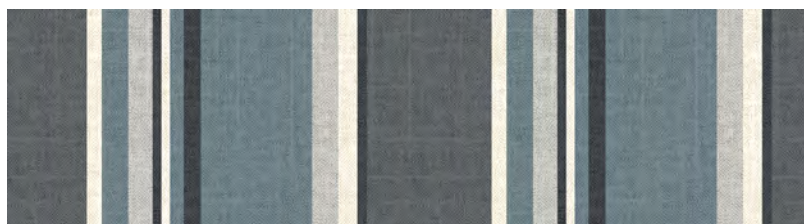


15221396

220gsm(± 10%)

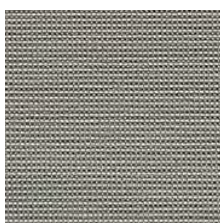


15216145 240gsm(± 10%)

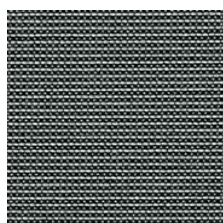


15221428

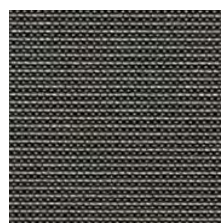
220gsm(± 10%)



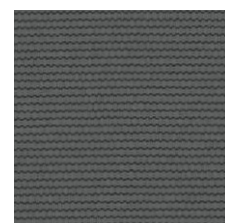
15216144 240gsm(± 10%)



15216137 240gsm(± 10%)



15216139 240gsm(± 10%)



15815834 285gsm(± 10%)

100% OUTDOOR FABRICS

百分百室外面料



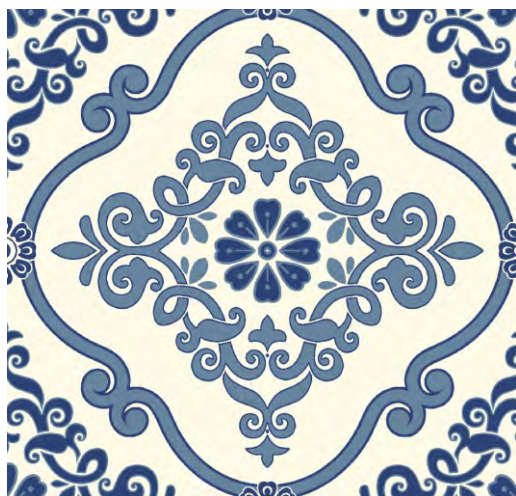
Outdoor
户外



Commercial
酒店工程



Decor
装饰材料



15221397

220gsm(±10%)



15221399

220gsm(±10%)



15221398

220gsm(±10%)



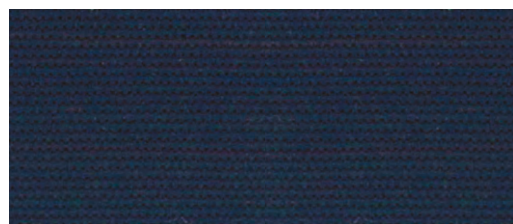
15221400

220gsm(±10%)



15221429

220gsm(±10%)



15815833

285gsm(±10%)



15221430

220gsm(±10%)

100% OUTDOOR FABRICS

百分百室外面料



Outdoor
户外



Commercial
酒店工程



Decor
装饰材料



15221401

220gsm(± 10%)



15221403

220gsm(± 10%)



15221432

220gsm(± 10%)



15221402

220gsm(± 10%)



15815814

285gsm(± 10%)

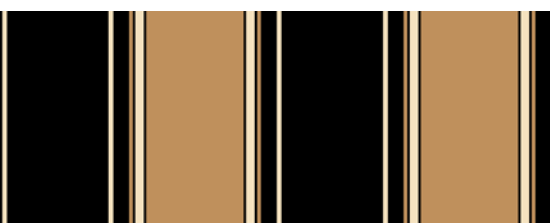


15221404

220gsm(± 10%)



15221431



220gsm(± 10%)

Guangzhou Mos Trading Company Limited is a comprehensive outdoor material provider since 2010. The company's missions are to supply with quality products, offer fast delivery, and maintain superb services all the time. The product ranges include all-weather fabrics, outdoor performance fabrics, and 100% tested & proven materials to cover you against sun and rain as well as to decorate your outdoor products. Over the years, the company has serviced thousands of clients, including design agencies, manufacturers, and contractors in mainland China and the rest of the world. The company's vision is to bring desirable design at the right price, leading to the best satisfaction.

广州晴晴家具贸易有限公司（简称晴晴户外材料）是一家专注于户外面料的研发、设计、生产、销售、服务于一体大型服务商，产品线涵盖有户外家具遮阳面料、户外装饰材料、遮光材料、抱枕等相关配件。目前，晴晴户外材料服务众多优质户外家具制造商，产品远销世界各地。

TECHNICAL DATA & FEATURES / 技术参数与功能特点

<div>Fabric Content 面料材质</div> <div>Physical Properties 物性</div>	100% Polyester
Abrasion/磨耗 (ASTM D4157 in RUBS)	>15000 Cycles
Pilling/起球 (ISO 12495-2 5000 Revolutions) (ASTM D4970 10000 Moments)	Class 4-5 Class 4-5
Color-fastness to light/日光牢度 (AATCC 16-2004, option 3 grey scale) (ISO 105 B02:2014 Blue wool ref.)	>Class3.0@200hrs Grade 5 or above
Crocking/磨擦(AATCC 8) ≥ (Dry/干磨擦) ≥ (Wet/湿磨擦)	Class 4.0 Class 3.5
Tensile Strength/张力 (ASTM D5034)	225lb warp 100lb weft
Tear Strength/撕力 (ASTM 1424, Capacity of Tester: 6400g)	+11.5 warp 8.0 weft
Water repellent/泼水度 (AATCC 22-2005, max 100)	>90%
UPF Testing/紫外线保护系数 (AS/NZS4399-1996)	50+ (Actual rating >500hrs)
Pigmentation/着色方式	Pieced-Dyed or Printed with UV stabilizers
Warranty(Life Usage)/建议日晒(材质寿命)	12 months(>5 years)
CA Technical Bulletin 117-2013美标防火 Flammability BS 5852英标阻燃	PASS UPON REQUEST

Based on the average rating and different colors/styles maybe vary.
备注：以上数据为内部实验室和第三方检测机构的平均技术参数。

百分百户外面料清洁维护使用说明

百分百户外面料表面有做泼水防污处理，不仅色牢度高，手感细腻且柔软。产品在使用过程中，建议做好清洁维护，延长布料的使用寿命。

日常洗涤：

- 1、清洗前先做好准备工作：拉好拉链，扣好扣子，贴好魔术贴，软毛刷等。
- 2、用软毛刷轻轻擦拭表面灰尘和其它附着物。
- 3、用水直接冲刷或者将布料全部水浸。
- 4、中性清洁剂需（1:5）稀释，水温低于30度，可加速污渍分解。
- 5、顽固污渍或霉斑可浸泡15分钟后洗涤。
- 6、清水冲刷，直至表面没有泡沫。
- 7、自然晾干。

温馨提示：

- 1、洗涤用具首选软毛刷或纤维毛巾（白色）。
- 2、远离高温和明火。
- 3、尽量远离油污，它会堵塞透气的微孔，导致发霉。
- 4、不同面料有纹路肌理的区别，使用过程中不要过度拉伸。
- 5、出现褶皱的布料，可以使用电熨斗（低温），按压时间不易太长，否则加速损坏。
- 6、切勿使用漂白剂。
- 7、冬天和特殊天气（自然台风、暴雨预警），尽量将室外物品（坐垫、抱枕等）收纳起来，减缓雨雪、低温和大风对面料的物理性损耗。
- 8、产品可机洗，并脱水；过程中，必须以轻柔模式，水温不高于30度。自然晾干最佳。

布料如需要再次做防护处理，请咨询专业布料护理专家。

100% Outdoor Fabrics / Maintenance and Cleaning Instructions

100% outdoor fabrics adopts the unique surface treatments for water and dirt repellency. Our fabrics are so superior not only for its high colorfastness to light, but also on its comfortable soft hand. Consumers are recommended to follow up with the cleaning and maintenance instructions appropriately to keep the fabrics in good conditions.

Routine Cleaning:

1. Before cleaning, pull up all zippers, buckle all buttons, Velcros on, and prepare a soft brush for next steps.
2. Use a soft brush gently to wipe off dusts, or other attachments on the fabrics.
3. Wash off the dust and dirt on the fabric with water or soak the fabrics in the water.
4. The neutral detergent needs to be diluted (1:5). The water temperature should be lower than 30° c, which will help to quicken the decomposition of stains.
5. Stubborn stains can be soaked in the diluted detergent for 15 minutes before cleaning.
6. Brushing with water till no foam on the fabric.
7. Keep the fabric air dry.

Friendly Reminder:

1. The best tools for cleaning the fabrics are the soft brush, or a clean white towel.
2. Keep fabrics away from heat and flame.
3. Keep fabrics away from oil which will block the air-permeable micro pores and cause molds so to affect the fabrics' performance.
4. Various fabrics have different structures and textures; do not excessively stretch fabrics while using.
5. For the fabric with wrinkles, ironing it with low temperature is allowed but the touching time for the iron should not last too long, so to avoid any possible damage due to the heat.
6. Do not use bleach.
7. In winter or under severe weather (Tornado, Hurricane or Heavy Rain), please store your furniture such as cushions, pillows, parasols...etc. safely, and avoid the fabric damage caused by snow, strong wind or low temperature.
8. Machine washable and okay to spin dry. During the process, it must be in gentle mode, and the water temperature should not be higher than 30 degrees Celsius. The most recommended way is to let them air dry.

If you need to retreat the fabrics with any extra special cares, please consult professional fabric specialists.

百分百户外面料清洁维护使用说明

百分百户外面料表面有做泼水防污处理，不仅色牢度高，手感细腻且柔软。产品在使用过程中，建议做好清洁维护，延长布料的使用寿命。

日常洗涤：

- 1、清洗前先做好准备工作：拉好拉链，扣好扣子，贴好魔术贴，软毛刷等。
- 2、用软毛刷轻轻擦拭表面灰尘和其它附着物。
- 3、用水直接冲刷或者将布料全部水浸。
- 4、中性清洁剂需（1:5）稀释，水温低于30度，可加速污渍分解。
- 5、顽固污渍或霉斑可浸泡15分钟后洗涤。
- 6、清水冲刷，直至表面没有泡沫。
- 7、自然晾干。

温馨提示：

- 1、洗涤用具首选软毛刷或纤维毛巾（白色）。
- 2、远离高温和明火。
- 3、尽量远离油污，它会堵塞透气的微孔，导致发霉。
- 4、不同面料有纹路肌理的区别，使用过程中不要过度拉伸。
- 5、出现褶皱的布料，可以使用电熨斗（低温），按压时间不易太长，否则加速损坏。
- 6、切勿使用漂白剂。
- 7、冬天和特殊天气（自然台风、暴雨预警），尽量将室外物品（坐垫、抱枕等）收纳起来，减缓雨雪、低温和大风对面料的物理性损耗。
- 8、产品可机洗，并脱水；过程中，必须以轻柔模式，水温不高于30度。自然晾干最佳。

布料如需要再次做防护处理，请咨询专业布料护理专家。

100% Outdoor Fabrics / Maintenance and Cleaning Instructions

100% outdoor fabrics adopts the unique surface treatments for water and dirt repellency. Our fabrics are so superior not only for its high colorfastness to light, but also on its comfortable soft hand. Consumers are recommended to follow up with the cleaning and maintenance instructions appropriately to keep the fabrics in good conditions.

Routine Cleaning:

1. Before cleaning, pull up all zippers, buckle all buttons, Velcros on, and prepare a soft brush for next steps.
2. Use a soft brush gently to wipe off dusts, or other attachments on the fabrics.
3. Wash off the dust and dirt on the fabric with water or soak the fabrics in the water.
4. The neutral detergent needs to be diluted (1:5). The water temperature should be lower than 30° c, which will help to quicken the decomposition of stains.
5. Stubborn stains can be soaked in the diluted detergent for 15 minutes before cleaning.
6. Brushing with water till no foam on the fabric.
7. Keep the fabric air dry.

Friendly Reminder:

1. The best tools for cleaning the fabrics are the soft brush, or a clean white towel.
2. Keep fabrics away from heat and flame.
3. Keep fabrics away from oil which will block the air-permeable micro pores and cause molds so to affect the fabrics' performance.
4. Various fabrics have different structures and textures; do not excessively stretch fabrics while using.
5. For the fabric with wrinkles, ironing it with low temperature is allowed but the touching time for the iron should not last too long, so to avoid any possible damage due to the heat.
6. Do not use bleach.
7. In winter or under severe weather (Tornado, Hurricane or Heavy Rain), please store your furniture such as cushions, pillows, parasols...etc. safely, and avoid the fabric damage caused by snow, strong wind or low temperature.
8. Machine washable and okay to spin dry. During the process, it must be in gentle mode, and the water temperature should not be higher than 30 degrees Celsius. The most recommended way is to let them air dry.

If you need to retreat the fabrics with any extra special cares, please consult professional fabric specialists.

Global Headquarters / 运营总部
Mosaroma International Co., Ltd.
同恩乐有限公司
7F, Blissful Building, 243-247 Des Voeux Road Central, Hong Kong
香港德辅道中243-247号德祐大厦7楼
www.mosaroma.com

China Operation Office / 中国营销中心
Guangzhou Mos Trading Co., Ltd.
广州晴晴家具贸易有限公司
No. 175 Shinan Rd., Dongchong Town, Nansha District, Guangzhou, Guangdong China
广东省广州市南沙区东涌镇市南公路175号
Tel: 020-22862298 Fax: 020-22862299
www.mosaroma.com.cn



关注晴晴公众号



晴晴 微商城